



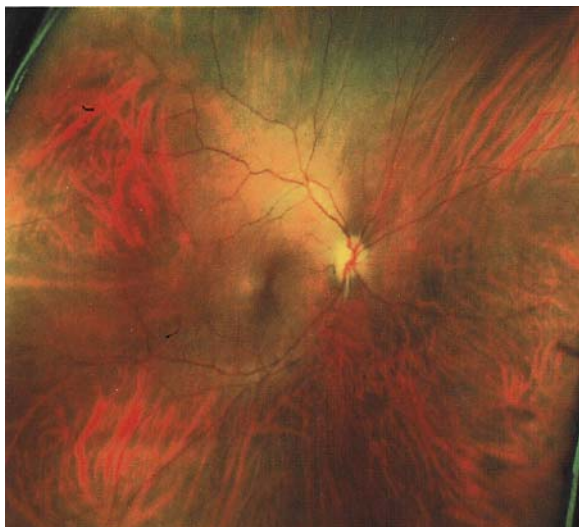
In our continued efforts to bring the most advanced technology available to our patients, Dr. Tarnoff & Dr. Hilliard are proud to announce the inclusion of the Optomap retinal exam as an integral part of your eye exam today.

Your Doctor is concerned about retinal problems including macular degeneration, glaucoma, retinal holes or detachments and systemic diseases such as diabetes, stroke and high blood pressure. These conditions can lead to serious health problems, including partial loss of vision or blindness and often develop without warning and progress with no symptoms.

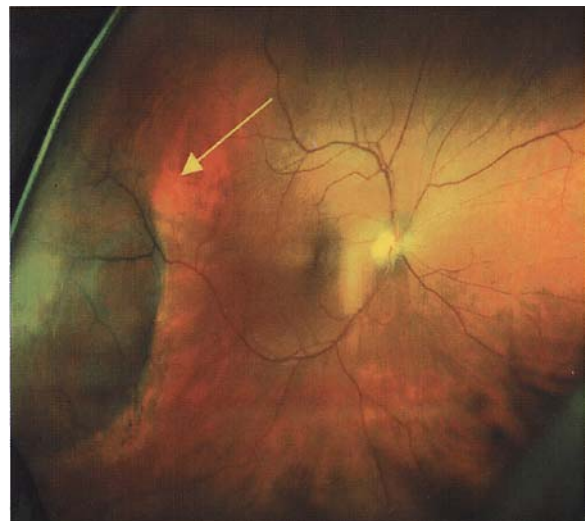
An Optomap exam provides:

- An eye wellness scan.
- An in depth view of the retinal layers (where disease can start).
- The ability for you to view your Optomap retinal image with your Doctor during your exam.
- An annual, permanent record for your medical file, which gives your Doctor comparisons for tracking and diagnosing potential eye disease.

The Optomap exam is fast, easy and comfortable.



Healthy Retina



Unhealthy Retina

Insurance typically does not cover any advanced screening technology beyond the general eye exam. Your Doctor highly recommends the Optomap retinal exam for all patients. We will be performing the Optomap Retinal Exam as an enhancement to the general eye exam for a fee of \$32.00*.

* Highmark Insurance now covers Optomap Screening for Diabetic patients.